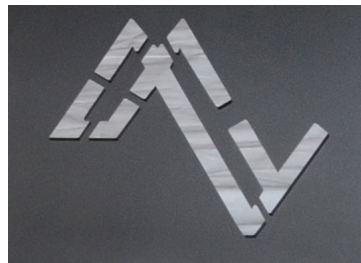
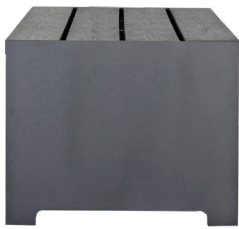


HUTCH PARK BENCH

Model Number : HB-5 (5 ft Shown), HB-6 (6 ft), HB-10 (10 ft), HB-12 (12 ft)



DESIGNER NOTES

This bench design was developed following a request from landscape architect looking for a bench that had a thick and robust look. Initially the only way to achieve this was to use 4x6 material. Unfortunately, the problem with this option was that the 4x6 material was really expensive making it a tough sell. Over time and in true Wishbone fashion we came up with a solution to reduce the cost while maintaining the look. We figured, why not combine two materials on the leading edge?

Introducing the new and improved Hutch Bench. It still has the thick robust profile, but now is 36% lighter and 27% less expensive than previous versions making it very affordable. There is the added bonus of having the ability to do custom branding of graphics or logos on the leg ends.

AVAILABLE RECYCLED PLASTIC LUMBER COLOURS



Black Grey Redwood Sand Walnut



PRODUCT SPECIFICATIONS

100% Recycled Plastic Slats

This product will not rot, splinter, or warp reducing maintenance costs over the life of the product.

Colours Available: Black, Grey, Redwood, Sand, Walnut

10 YEAR LIMITED WARRANTY

Durable Powder Coated Aluminum Frame

Standard Colours: Brown Slate, Victor Ridge II, Nordic Lichen, Timeless Rust, Grey Gold, Textured Silver, Precious Sand, Groovy Red, Black Textured, Earth Clay, Noble Bronze, Modern Khaki, Flame Red, Pastel Orange, Signal Violet, Traffic Yellow, Ultramarine Blue, Water Blue, Yellow Green

Long Lasting Stainless Steel Hardware

CUSTOMIZED SOLUTIONS

2ft up to 12ft Lengths

Customizable Leg Ends with Graphics or Logo

Custom Powder Coating (Setup Charges May Apply)

Skate Blocks

INST-1 Stainless Steel Bolt-Down Kit

PRODUCT DIMENSIONS

Seat Height	18 inches/457 mm
Seat Depth	22 1/4 inches/565 mm
Length	5 feet/152 cm
Weight	122 lbs/55 kg

RECYCLED CONTENT

67% RECYCLED CONTENT BY WEIGHT
100% RECYCLABLE



100% Canadian Made



Wishbone Ltd. provides an extended 10 year limited warranty from the date of invoice.



Visit us online at www.Wishboneltd.com

Wishbone Site Furnishings | #210-27090 Gloucester Way | Langley, BC CANADA V4W 3Y5
1.866.626.0476 sales@wishboneltd.com