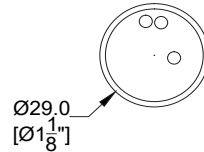
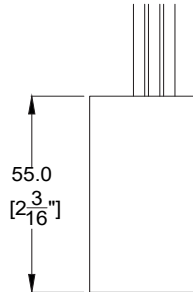


Project Name: \_\_\_\_\_  
 Client: \_\_\_\_\_  
 Type: \_\_\_\_\_  
 Quantity: \_\_\_\_\_

# SURGE PROTECTOR

BL-SP-UNI-20KA



## Electrical

Input Voltage	100V - 277V or Universal voltage ballast
Wiring Details	3x 18AWG wires
Protection	Rated category C3 surge location IEEE/ANSI C62.41.2 High (10kA & 10kV)
Surge Current Rating	20,000 A
	8/20 $\mu$ Sec wave
Surge Rating (2mS)	540 Joules
Maximum Clamping Voltage	925V
Strikes	Surge Rating
1	22,000A
2	15,000A
10	6,500A
120	3,000A
1000	2,000A

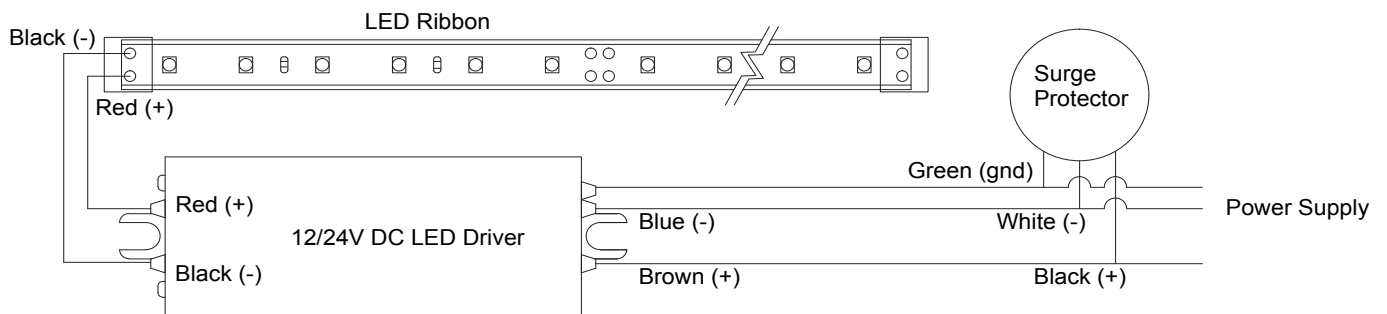
## Applications

- Protection from voltage surges for low voltage LED lighting circuits
- Hardwired connection at Line Voltage Power Supply

## Mechanical

Construction	High temperature Flameproof plastic enclosure 85°C max surface rating
Cord Length	30 cm (12")
Weatherability	IP65 Splash proof
Weight	126 g (4.4 oz)
Certification	CSA-C22.2 No. 269.5

## Connection Diagram



Surge protection is highly recommended for all LED lighting products and should be on a designated circuit to protect against premature failure  
 Lack of surge protection may void your warranty  
 Specifications may change without notice