

## Hands Free (HF32 / HF55) – Summer to Winter Conversion

Date: July 2013



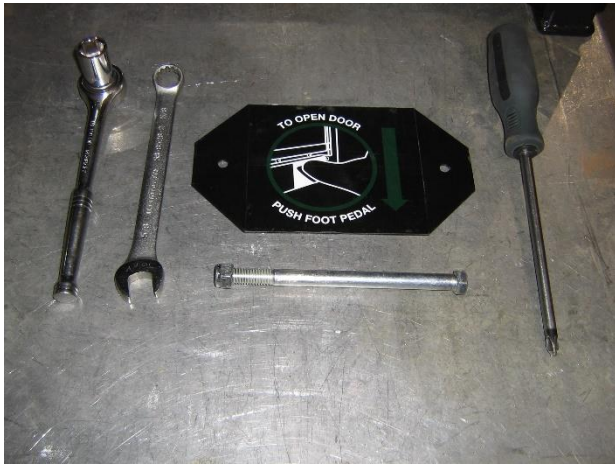
Summer operation of container with the stickered decal plate attached to the front of the load door & access to the bear proof foot pedal.



Winter operation of container with the supplied handle attached to the load door & the supplied foot pedal cover plate attached to the container.



Tools and parts required for Winter Operation.



Tools and parts required for Summer Operation.



Proposed location for  
Summer Operation items  
(bolt & decal plate).



Proposed location for Winter  
Operation items(handle &  
foot pedal cover plate).

The following steps will be required to convert the container from  
Summer Operation to Winter Operation.



**Step 1**  
Remove the stickered decal plate from the front of the load door using a Phillips Screwdriver.

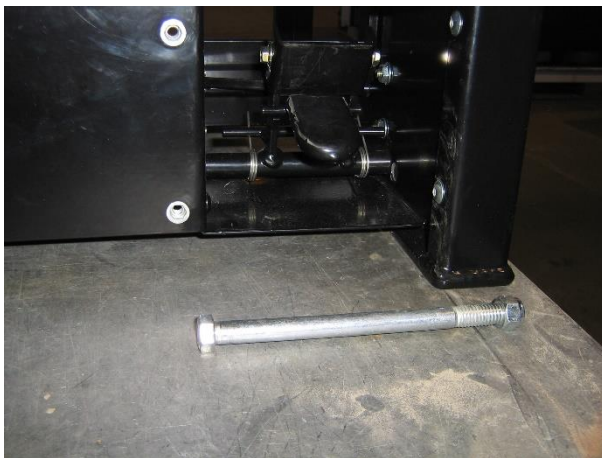


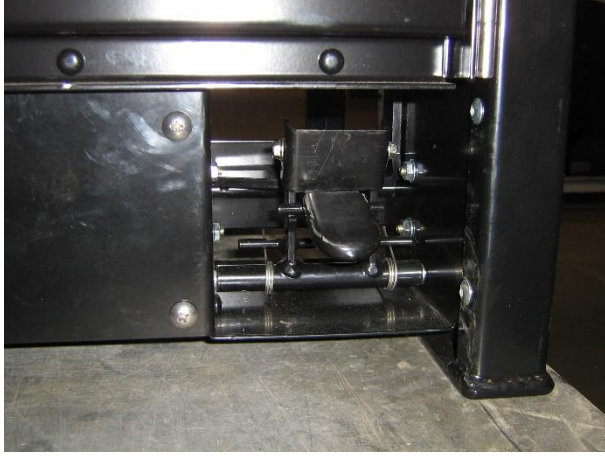
**Step 2**  
Install the supplied handle to front of the load door using the same fasteners & Phillips Screwdriver.



### Step 3

Remove the 7/16" x 6" long bolt and 7/16" nylon locknut from the bear proof trigger latch using a 5/8" open end wrench and a 5/8" socket and ratchet wrench. Allow the trigger latch to fall freely within the pedal box, it should not interfere during winter operation.





#### **Step 4**

Attach the foot pedal cover plate using a Phillips Screwdriver and the supplied fasteners on the container, as shown in the pictures.



When converting container from Winter Operation to Summer Operation, just reverse above steps.